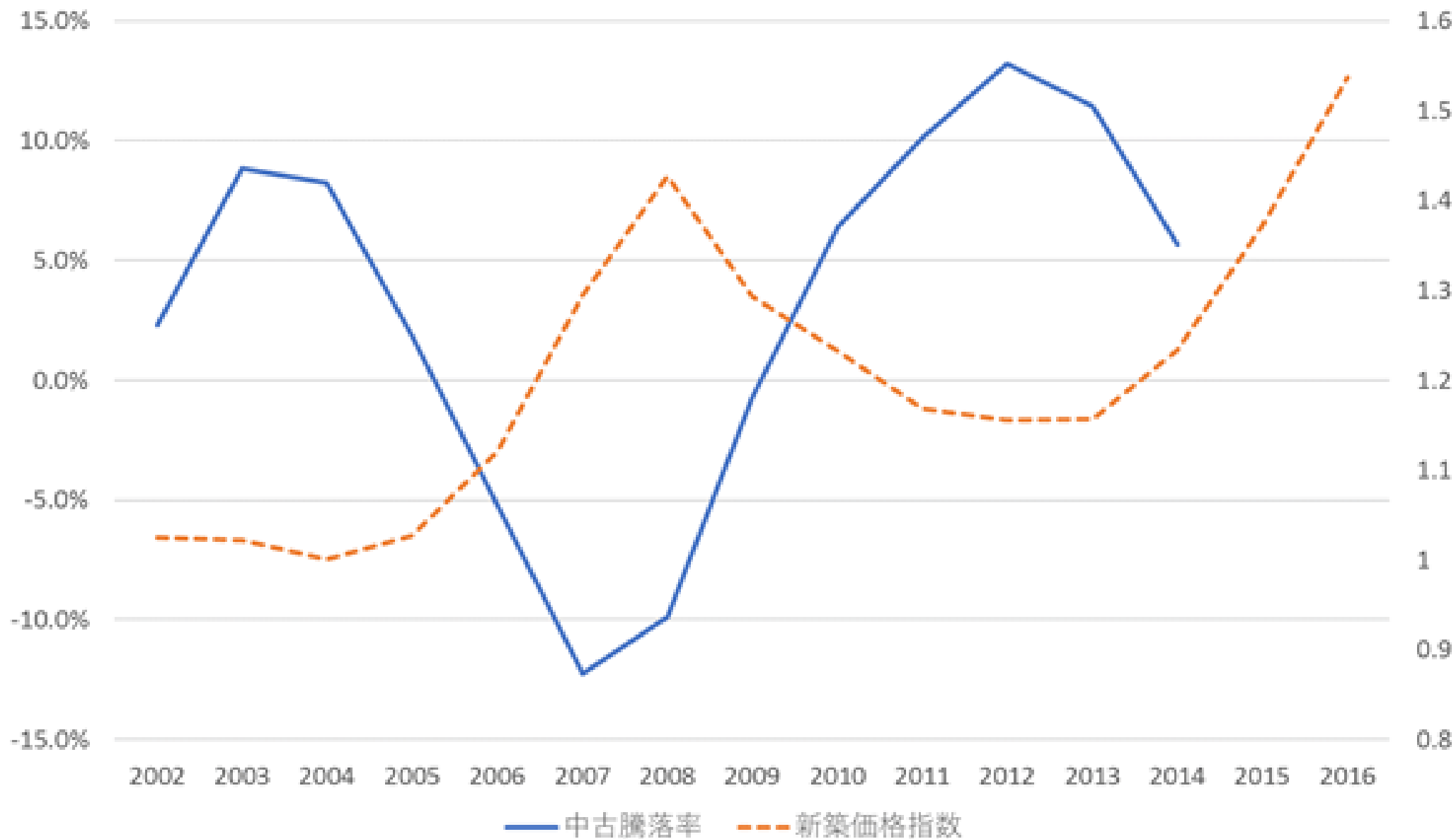
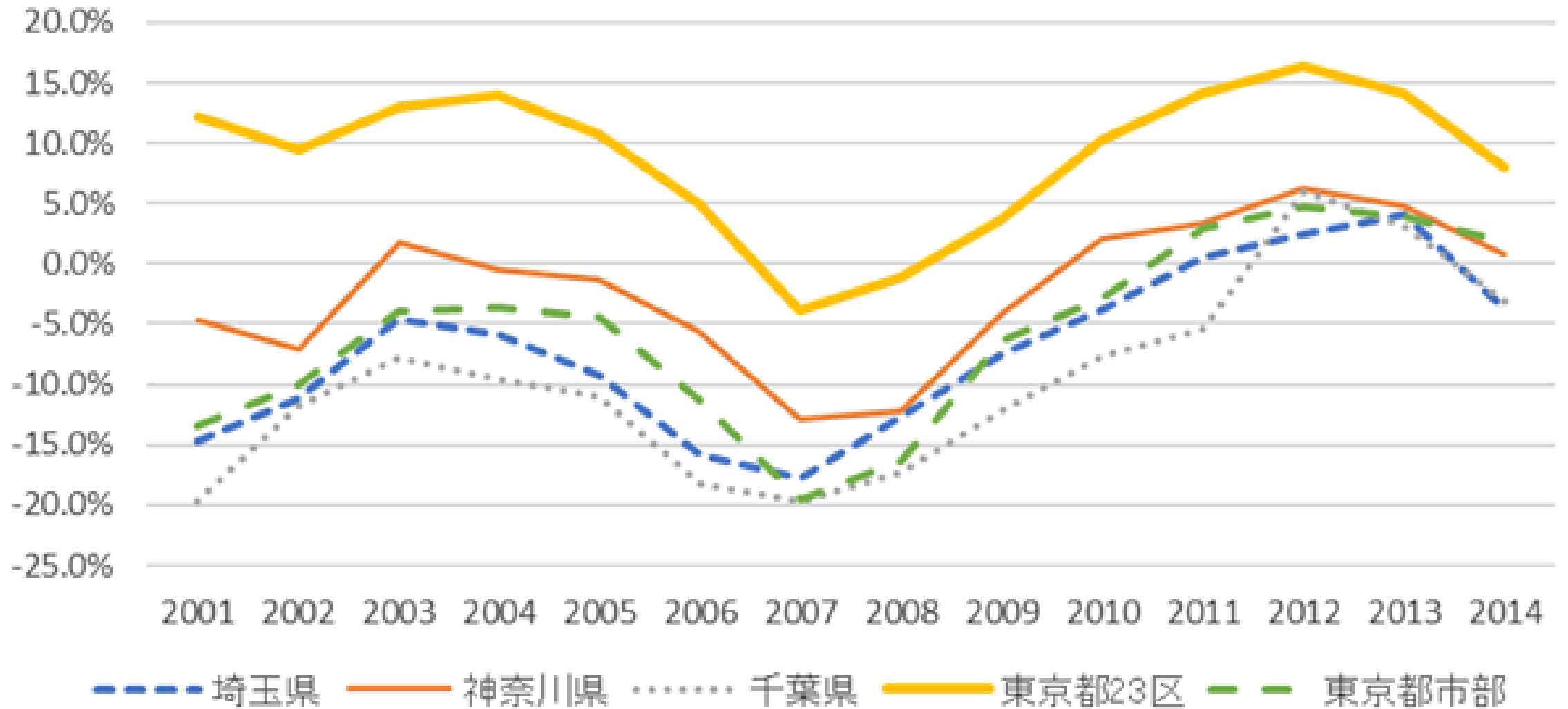


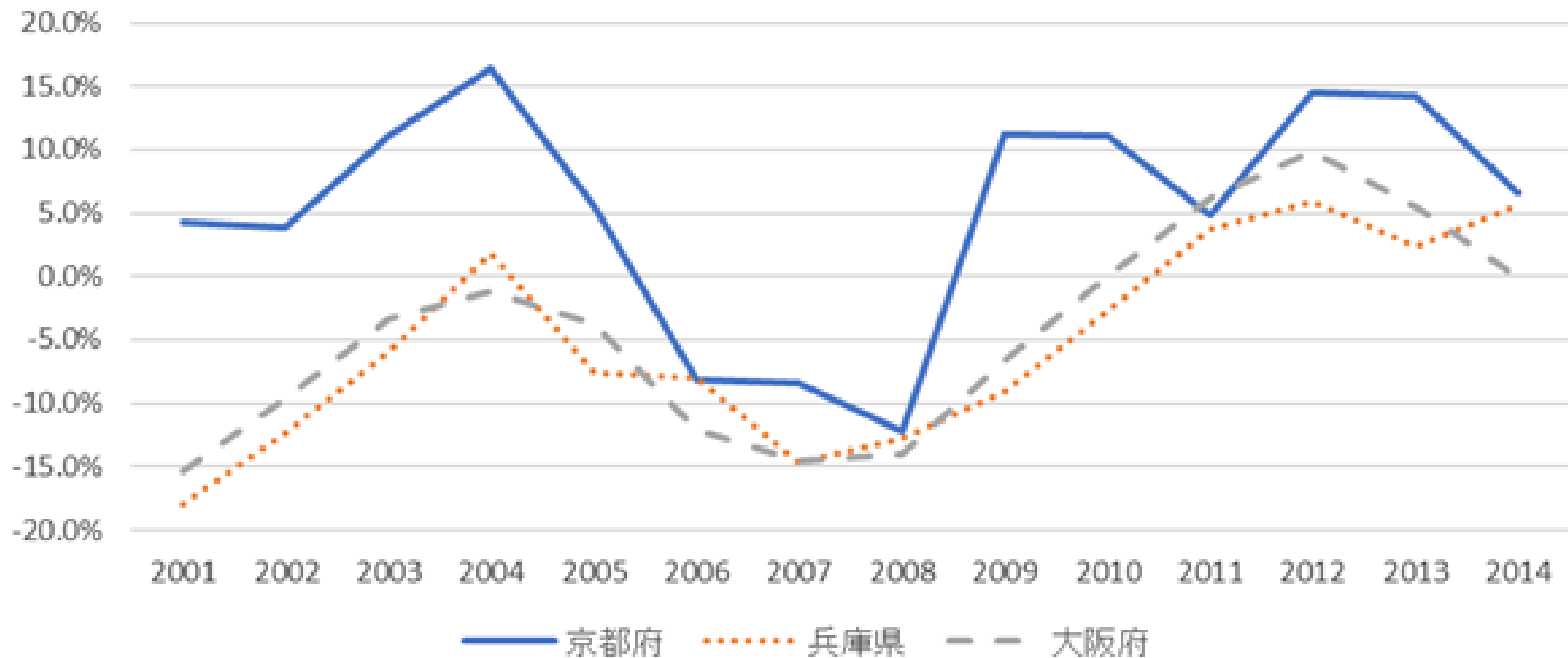
首都圈 中古騰落率×新築価格指数



首都圏 エリア別中古騰落率



関西圏 エリア別中古騰落率



【東京都：中古騰落率ベスト5】

分譲年 市区町村名	2001	2002	2003	2004	2005	2006	2007	2008	2009	2010	2011	2012	2013	2014	総計
港区	23.3%	18.2%	25.7%	25.3%	20.7%	20.8%	7.9%	34.1%	5.7%	30.4%	27.5%	34.8%	29.5%	16.4%	23.7%
中央区	25.1%	19.4%	20.9%	33.8%	26.9%	15.7%	5.0%	14.3%	21.9%	20.1%	23.5%	23.1%	20.4%	12.9%	22.6%
台東区	31.2%	32.3%	25.9%	32.7%	21.6%	9.0%	-12.4%	-3.0%	5.3%	11.1%	19.5%	20.7%	21.1%		19.6%
千代田区	38.7%	12.0%	16.6%	4.4%	7.3%	13.3%	5.5%	9.9%		22.4%	33.1%	32.5%	32.1%	12.9%	18.3%
渋谷区	23.3%	12.8%	12.6%	12.0%	22.9%	13.1%	1.2%	8.1%	5.5%	12.9%	21.7%	30.3%	24.9%	14.6%	16.7%

【神奈川県：中古騰落率ベスト5】

分譲年 市区町村名	2001	2002	2003	2004	2005	2006	2007	2008	2009	2010	2011	2012	2013	2014	総計
横浜市西区	29.4%	12.8%	21.0%	-6.9%	39.4%	-16.3%	-5.6%	7.3%	-1.7%	14.7%	11.4%	32.8%			18.4%
川崎市中原区	10.5%	16.1%	21.9%	20.6%	19.7%	16.4%	-7.7%	0.2%	10.0%	13.4%	10.0%	17.6%	10.5%	-1.2%	13.5%
川崎市幸区	-4.6%	11.2%	31.0%	19.2%	25.9%	10.0%	2.1%	0.9%	4.3%	13.9%	11.5%	18.4%	-3.2%	5.3%	9.3%
横浜市中区	22.1%	13.1%	10.4%	13.6%	12.1%	6.7%	-11.3%	-12.2%	-7.8%	16.9%	3.6%	7.7%	13.3%	5.9%	8.5%
横浜市神奈川区	2.7%	11.5%	12.8%	14.6%	44.4%	7.6%	-1.3%	-10.9%	-0.8%	-2.1%	10.2%	16.6%	19.0%	0.0%	8.4%

【埼玉県：中古騰落率ベスト5】

分譲年 市区町村名	2001	2002	2003	2004	2005	2006	2007	2008	2009	2010	2011	2012	2013	2014	総計
さいたま市浦和区	12.8%	1.4%	9.7%	16.9%	0.6%	-0.6%	-7.4%	-5.1%	2.0%	7.6%	12.8%	19.5%	7.0%	-3.8%	6.6%
さいたま市中央区		3.2%	29.3%	28.8%	-1.8%	-5.2%	-8.9%		14.0%	-8.2%	0.6%	8.4%			3.3%
さいたま市大宮区	-18.8%	-8.0%	12.3%	15.7%	5.1%	-10.5%	0.1%	-3.8%	-1.6%	11.3%	5.8%	1.8%	9.3%		3.0%
戸田市	-4.5%	5.0%	-6.0%	-5.4%	-0.5%	-5.8%	-25.9%	12.8%	-4.8%	-4.2%	8.0%	12.8%	7.0%	-3.2%	-1.8%
川口市	-8.7%	-9.1%	7.8%	14.3%	1.0%	-7.8%	-13.6%	-14.6%	-2.1%	-3.9%	-4.4%	1.0%	4.2%		-3.5%

【千葉県：中古騰落率ベスト5】

分譲年 市区町村名	2001	2002	2003	2004	2005	2006	2007	2008	2009	2010	2011	2012	2013	2014	総計
成田市		4.0%	-16.0%	36.3%	-11.3%		-11.4%					46.4%			5.1%
浦安市	11.3%	-0.1%	22.9%	8.4%	-1.2%	-2.7%	-21.3%	-13.4%	-18.5%	-6.1%			-1.2%		1.5%
市川市	-3.1%	2.0%	-6.9%	3.5%	4.1%	-14.6%	-13.5%	-13.2%	1.2%	0.1%	13.6%	6.5%	-0.5%	-0.3%	-2.4%
千葉市中央区	-7.1%	-1.5%	-25.7%	7.2%	-7.0%	-11.2%	-15.5%	-10.5%	-5.8%	-1.6%	-5.3%	0.9%	6.5%	7.8%	-7.5%
船橋市	-12.8%	-8.4%	-2.6%	-18.1%	-6.4%	-9.9%	-19.6%	-15.4%	-7.4%	-13.2%	-6.8%	14.3%	11.1%	-10.5%	-10.2%

【京都府：中古騰落率ベスト5】

分譲年 市区町村名	2001	2002	2003	2004	2005	2006	2007	2008	2009	2010	2011	2012	2013	2014	総計
京都市中京区	79.2%	69.8%	53.0%	39.0%	24.2%	18.8%	7.7%	-6.7%	24.8%	42.8%	17.4%	19.7%	21.1%	8.2%	32.6%
京都市東山区		7.4%		-8.4%	26.5%		1.5%	10.7%			5.6%	49.1%	36.5%		16.7%
京都市下京区	44.9%	27.1%	10.4%	16.4%	-2.0%	24.2%	5.5%	-12.0%	4.6%	35.1%	14.9%	13.7%	16.1%	7.9%	15.5%
京都市上京区		31.6%	30.4%	29.1%	6.9%	-0.5%	-17.1%	3.1%		17.2%	5.6%	13.5%			8.4%
京都市左京区	15.7%	45.3%	25.1%	34.0%	2.1%	-19.7%	-10.9%	-22.8%	21.6%		-1.3%	9.3%	-1.0%	3.5%	6.4%

【大阪府：中古騰落率ベスト5】

分譲年 市区町村名	2001	2002	2003	2004	2005	2006	2007	2008	2009	2010	2011	2012	2013	2014	総計
大阪市北区	13.4%	6.2%	15.6%	7.8%	21.1%	8.3%	-2.2%	-5.5%	-4.7%	2.4%	19.0%	19.9%	19.1%	-1.6%	11.3%
大阪市福島区	9.8%	11.1%	14.4%	5.5%	4.9%	8.7%	0.0%		18.6%	-2.1%	21.5%	11.4%	24.5%		10.7%
大阪市西区	9.4%	9.3%	11.9%	9.8%	12.6%	15.4%	6.9%	-12.1%	-0.4%	9.4%	-1.3%	25.4%	8.5%		10.2%
大阪市天王寺区	-2.2%	6.6%	11.8%	8.7%	20.1%	6.7%	5.6%	9.6%	20.9%	14.4%	18.9%	8.0%	13.3%		9.9%
大阪市中央区	6.0%	7.5%	6.9%	12.3%	14.2%	12.4%	0.0%	-5.9%	3.1%	-5.4%	10.7%	14.5%	10.0%	8.6%	8.2%

【兵庫県：中古騰落率ベスト5】

市区町村名 \ 分譲年	2001	2002	2003	2004	2005	2006	2007	2008	2009	2010	2011	2012	2013	2014	総計
神戸市灘区	-3.3%	-1.1%	2.7%	23.7%	15.0%	2.3%	-8.7%	-1.8%	12.1%	4.2%		8.7%	5.3%		3.9%
神戸市中央区	-0.3%	-0.6%	10.9%	2.3%	3.3%	4.1%	-3.2%	-10.3%	-14.1%	2.0%	14.6%	16.5%	-0.1%	0.1%	3.2%
神戸市東灘区	5.3%	8.9%	-4.6%	14.2%	3.4%	-6.7%	-15.8%	-6.8%	-13.4%	6.4%	2.5%	0.6%	7.9%	14.5%	0.6%
西宮市	-13.4%	-8.7%	-15.4%	5.5%	1.6%	5.2%	-13.7%	-9.0%	-5.1%	0.7%	1.2%	8.5%	7.1%		-1.6%
伊丹市	-19.8%	-12.7%	17.7%	0.5%	-14.6%	0.5%	-18.6%	-2.0%			-4.5%	10.7%			-3.9%